

外框架型式

Outer frame rack type

AJ-001 (L型)

強力型

Reinforced type



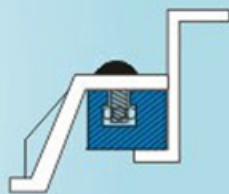
AJ-002 (V型)

輕便型

● 焊錫爐輸送夾

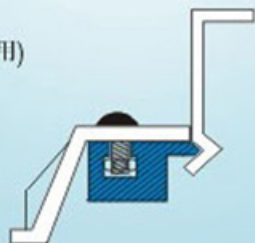
Portable type

● Conveying Pinch of welding stove.



AJ-003

(L型、V型共用)



AJ-004 (V型)

● 基板及焊錫架共用式
焊錫爐輸送夾

● Co-using type for base board and welding stand.

● Conveying Pinch of welding stove.



夾持片 Pinching Pin

鋁擠型特殊處理 Aluminium Squeezing type special treatment



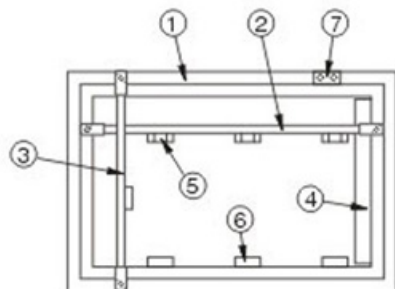
彈性夾持片



固定夾持片



形式: 1. 2. 3.



標準型焊錫架

1. 鋁框6061陽極處理, 硬厚膜處理
2. X軸鋁棒固定座, 不銹鋼蝴蝶帽
3. Y軸鋁棒及後托板
4. 前擋錫板硬厚膜處理
5. 彈性夾持座硬厚膜處理
6. 固定夾持座硬厚膜處理
7. 感應塊
8. 雙用式彈、固定夾持座